

Kettle Brook Local Nature Reserve

The Kettle Brook

The Brook gives its name to, and runs the whole length of, the reserve, eventually flowing into Borrowpit Lake in the centre of Tamworth. It provides a slow-flowing wetland habitat for many plants and animals. Much of the bottom of the brook was covered in plastic mesh in the 1980s as part of an erosion control programme. This is no longer needed and will gradually be removed to improve the habitat.

Wild Flower Meadows

Local schools have been involved in planting wild flowers in the reserve. These and other areas will be managed by cutting only once or twice a year to promote their growth and spread of seed to other areas. Look out for butterflies and other insects feeding from the flowers in these areas.



Islands

Islands provide a refuge and nesting site for many birds. Look out for swans, coots, mallards and moorhens nesting here.



Lakes

The lakes attract many species of wildfowl, from mute swan and tufted duck to grey heron and little grebe. Some are relatively new, being constructed to take run-off from the A5. Many of them lack marginal vegetation, which will be planted over the coming years.



Woodland

Many of the woodland areas were planted in the 1970s and 1980s and have become dense. Conservation volunteers are working on these areas, by cutting down selected trees and allowing them to re-grow. This will produce a more varied woodland and benefit wildlife such as small mammals, birds and insects.



Hedgerows

Hedgerows are valuable as a food supply for birds and small mammals as well as a refuge and nesting site. Some stretches of hedgerow have been recently managed by 'hedgelaying' which is a traditional method of management.



Artwork

The Kettle Brook Youth and Environment Project was funded by a Barclays SiteSavers award in 2004-2005. This involved young people from Tamworth in creating artwork for the site that is now incorporated into a trail at Belgrave Lakes.



Key	
	Steps
	Bridge
	Wildflower plantation
	Unsurfaced path
	Surfaced path
	LNR boundary

Local Nature Reserve

Kettle Brook was designated as a Local Nature Reserve in July 2004. The site is owned by Tamworth Borough Council and managed in partnership with Staffordshire Wildlife Trust. The reserve is a valuable green corridor, both for wildlife and people, running through Tamworth Borough.



Tamworth's Mayor officially opens Kettle Brook Local Nature Reserve.



Bridge built by students from Tamworth and Lichfield College

Kettle Brook Volunteers

Practical conservation work and access improvements take place once a month to maintain and enhance the site. To get involved please call Staffordshire Wildlife Trust on 01889 880100.

Special thanks to Maurice Arnold, local naturalist and volunteer.

Image credits: Felicity Rose Cole, Colin Hayes, Darin Smith, Kath Stapley, Staffordshire Wildlife Trust

Location



Kettle Brook Local Nature Reserve stretches from Glascote Locks Wharf in the north west to the M42 in the south east. It can be accessed from many roads which back onto it. Car parks are on Watling Street and Birds Bush Road.



Staffordshire Wildlife Trust manages over 2,000 acres of land within the County for the benefit of wildlife and people. We are a registered charity (No. 259558) whose income depends largely on the support of our 11,000 plus members. If you care about wildlife and the environment, then why not join us today? To join, or for other information, contact: Staffordshire Wildlife Trust, The Wolseley Centre, Wolseley Bridge, Stafford, ST170WT.

01889 880100 staffswt@cix.co.uk
www.staffs-wildlife.org.uk



Tamworth Borough Council are the landowners of the site and are working in partnership with the Wildlife Trust to support the community in improving the environment for the benefit of both people and wildlife. Tamworth Borough Council, Marmion House, Lichfield Street, Tamworth, B79 7BZ.

01827 709709 enquiries@tamworth.gov.uk
www.tamworth.gov.uk

Leaflet produced with support from:



This leaflet produced using 100% chlorine-free wood pulp taken from sustainable, managed forests.



Staffordshire

Wildlife Trust

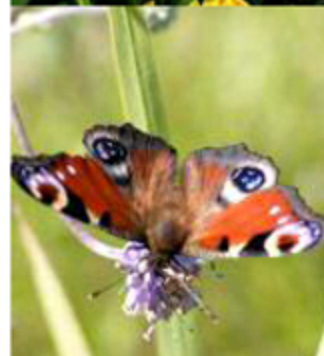


Explore

Kettle Brook

Local Nature Reserve

Wildlife Walks in Tamworth



Protecting Wildlife for the Future

Kettle Brook's Wildlife

Water Birds. The five lakes make Kettle Brook an attractive home to mallards, moorhens, coots and mute swans while less common species such as kingfisher, tufted duck, grey heron and little grebe are known to nest around the lakes. Over 200 individual water birds have been recorded on the larger lakes during winter.



Kingfisher



Tufted Duck



Grey Heron



Little Grebe

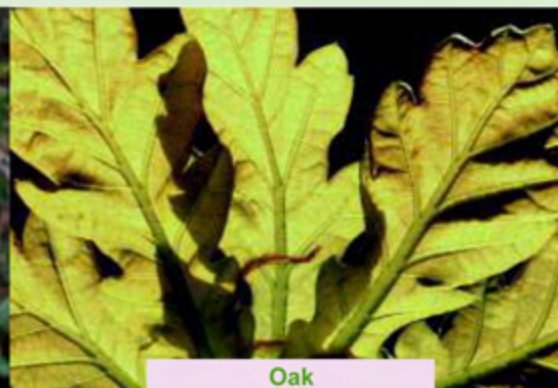
Trees. Kettle Brook is home to a good variety of native trees. These include wet woodland species such as alder and crack willow that unsurprisingly dominate wet areas. The numerous plantations include oak, hazel, silver birch, field maple and cherry. Birds such as blackcap and whitethroat are known to nest in the woodland.



Alder



Crack Willow



Oak



Hazel

Wild Flowers. These are best sought adjacent to the brook and upon the rough semi-improved grassland. Recent planting should supplement wildflower abundance and variety in the future. Common species include tufted vetch, cuckoo flower, knapweed and bird's foot trefoil.



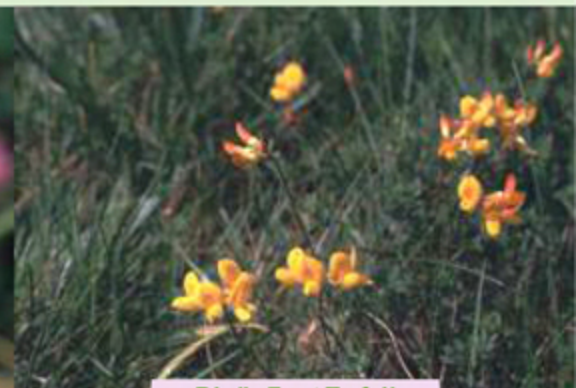
Tufted Vetch



Cuckoo Flower



Knapweed



Bird's Foot Trefoil