



A self-led Dragon Toddler Trek

at Warwickshire Moor, Tamworth
B77 3LP

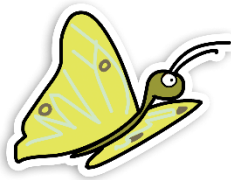


Follow the self led dragon inspired trail for *St. George's Day* around the boardwalk of Warwickshire Moor, stopping at each point for a different activity. Recommend time approx. 30-45 minutes.



Tamworth
Borough Council





A self-led

Dragon Toddler Trek

at Warwickshire Moor, Tamworth



Additional items we recommended:

- Dragonfly ID spotter sheet

Please follow government guidelines and maintain social distancing while on the site.



Trail activities:

1 Watch out, watch out dragon's eyes might be watching you... Look out for them in the trees.



5 March along to find the bench. Rest, snack or play. How about practicing your sword fighting skills?

2 Quick draw you sword brave knight... Can you find a stick for your sword?

6 See how the boardwalk curves and swoops? Can you pretend you're a swooping like a dragon? Let me hear your ROAR!

3 Scales from the slayed dragon lie here... Can you find any bark that looks like dragon scales?

7 Head on down to river view. Looking eyes at the reeds, can you spot any dragonflies?

4 Over the stream now, the source of bravery. Take 3 breathes in to top up yours.



8 Hear the reeds swish and sway? A dragon perhaps? There may be a nest of eggs hiding. Keep a look out noble Knights of The Moor.

